

# Staff Summary Report



Development Review Commission Date: 07/27/10

Agenda Item Number: \_\_\_\_

**SUBJECT:** Hold a public meeting for a Development Plan Review for AICI Parking Garage, located at 1280 W. Southern Avenue, in the GID General Industrial District.

**DOCUMENT NAME:** DRCr\_AICIParkingGarage\_072710

**PLANNED DEVELOPMENT (0406)**

**COMMENTS:** Request for **AICI PARKING GARAGE (PL100167)** (Anne Wagner, Controller at WesteroK LLC, property owner; Mark Mehrtens, MD Construction, Inc., applicant) consisting of a new three-story 464-space 162,000 s.f. free-standing parking structure adjacent to an existing 149,400 s.f. office building, for a total of approximately 310,800 s.f. on 9.63 net acres, located at 1280 W. Southern Avenue in the GID General Industrial District. The request includes the following:

**DPR10112** – Development Plan Review including site plan, building elevations, and landscape plan.

**PREPARED BY:** Diana Kaminski, Senior Planner (480-858-2391)

**REVIEWED BY:** Lisa Collins, Deputy Community Development Director-Planning (480-350-8989) 

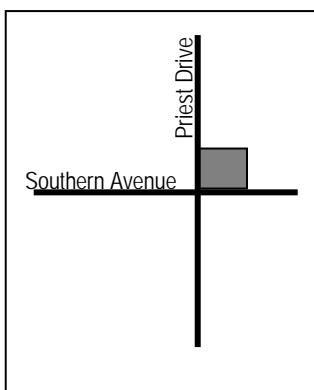
**LEGAL REVIEW BY:** N/A

**DEPARTMENT REVIEW BY:** N/A

**FISCAL NOTE:** N/A

**RECOMMENDATION:** Staff – Approval, subject to conditions

**ADDITIONAL INFO:**



Gross/Net site area	9.63 acres
Total Building area	162,000 s.f. (new garage), 148,800 (existing office building)
Lot Coverage	No Standard in GID
Building Height	28 ft (35 ft maximum allowed)
Building Setbacks	25' front, 105' street side, 0 rear (25' front & street side, 0' side and rear min.)
Landscape area	Existing to remain (10% minimum required)
Vehicle Parking	923 spaces (785 min. required, 981 max. allowed surface lots)
Bicycle Parking	Existing to remain (15 minimum required)

A neighborhood meeting was not required with this application.

**PAGES:**

1. List of Attachments
- 2-3. Comments
- 4-6. Reason for Approval / Conditions of Approval
7. History & Facts / Zoning & Development Code Reference

**ATTACHMENTS:**

1. Location Map
2. Aerial
3. Letter of Explanation
4. Site plan
- 5-6. Floor plans
- 7-8. Building Elevations
9. Building Sections
- 10-11. Landscape Plan
12. Preliminary Grading & Drainage Plan
- 13-16. Photographs
17. Color Board

## COMMENTS:

This site is located on the northeast corner of Priest Drive and Southern Avenue, on an existing developed site containing one building and surface parking. The building has been used for office uses since 1999 and has been successful at retaining call-center tenants, which require twice the parking as general office uses. The existing surface lot has 9 rows of covered parking. The proposed parking structure will replace 10 rows of surface parking with covered parking, providing more parking for the tenant mix within the three story office building.

Existing entitlements for this property that will remain in effect are:

- Variance to increase building height from 35' to 45' for the office building.
- Variance to reduce bicycle parking from 122 spaces to 40 spaces.

This request includes a Development Plan Review for a 3-story parking structure to serve existing general office and call center uses on 9.63 acres. The applicant is requesting the Development Review Commission approve the site plan, landscape plan and elevations for the new parking structure.

## PUBLIC INPUT

- A neighborhood meeting was not required

## PROJECT ANALYSIS

### DEVELOPMENT PLAN REVIEW

#### Site Plan

The existing 3-story office building is located on the north end of the site, with two rows of parking on both the east and west sides, and a pedestrian connection and open landscaped area connecting to a building on the adjacent parcel to the north. No modifications are being made to the existing perimeter landscape or drive entrances. Circulation will remain as it is currently constructed. The footprint of the new parking structure will remove landscape islands within existing parking rows, but will retain the parking islands flanking the driveway aisle through the site.

#### Building Elevations

Building materials are designed to compliment the existing 11-year old 3-story building. The structure will have split face block veneer columns and 4" cmu banding to match the building and painted concrete to blend with existing site walls. The building is oriented with the narrow end of the garage facing Southern Avenue, and the stair tower located on the southwest end to provide a break in the 180' long horizontal band of concrete spandrel panels and split face columns. The existing wall has wrought iron for a portion of the length, breaking up the wall massing at the streetfront.

#### Landscape Plan

Existing landscape on site will remain, with eight landscape islands being removed by the garage. New landscape at the western base of the garage will soften the structure at the pedestrian level. The plan indicates use of new plant materials to match existing, however the Zoning and Development Code will not allow shrubs taller than 2' adjacent to pedestrian ways, including parking spaces. The plant palette will need to be modified to comply with code requirements plant heights.

### Section 6-306 D Approval criteria for Development Plan Review

1. Placement, orientation and articulation of structure, wall and materials provides variety in the streetscape;
2. Building design and orientation, together with landscape, combine to mitigate heat gain/retention while providing shade for energy conservation and human comfort;
3. Materials are of a superior quality, providing detail appropriate with their location and function while complementing the surroundings;
4. Buildings, structures, and landscape elements are appropriately scaled, relative to the site and surroundings;

5. Vehicular circulation is designed to minimize conflicts with pedestrian access and circulation, and with surrounding residential uses;
6. Plans appropriately integrate *Crime Prevention Through Environmental Design* principles such as territoriality, natural surveillance, access control, activity support, and *maintenance*;
7. *Landscape* accents and provides delineation from *parking*, *buildings*, driveways and *pathways*;
8. Lighting is compatible with the proposed *building(s)* and adjoining *buildings* and uses, and does not create negative effects.

### Conclusion

Based on the information provided by the applicant and the above analysis staff recommends approval of the requested Development Plan Review. This request meets the required criteria and will conform to the conditions.

### REASONS FOR APPROVAL:

1. The project meets the General Plan Projected Land Use for this site and implements objectives within elements of the Plan.
2. The project will meet the development standards required under the Zoning and Development Code.
3. The proposed project meets the approval criteria for a Development Plan Review.

### CONDITIONS OF APPROVAL

1. Prior to submittal of construction documents for building permits, provide Community Development Department with a temporary parking plan for tenants displaced and relocated during construction. The temporary parking plan must be approved by all parties (City of Tempe, property owner/s and business owner/s) prior to issuance of building permits.

### Site Plan

2. Provide a safe and clearly demarcated pedestrian pathway from the structure to the building.

### Floor Plans

3. Secure underside of stairwells.
4. Exit Security:
  - a. Provide visual surveillance by means of fire-rated glazing assemblies from stair towers into adjacent circulation spaces.
  - b. In instances where an elevator or stair exit in the garage is within 21'-0" of an alcove, corner or other potential hiding place, position a refracting mirror to allow someone in the exit doorway to observe in the mirror the area around the corner or within the alcove that is adjacent to the doorway.
5. Garage Security:
  - a. Minimize interior partitions or convert these to semi-opaque screens to inhibit hiding behind these features.
  - b. Paint interior walls and overhead surfaces in garage floor levels with a highly reflective white color, minimum LRV of 75 percent.
  - c. Maximize openness at the elevator entrances and stair landings to facilitate visual surveillance from these pedestrian circulation areas to the adjacent parking level.
6. Parking Garage:
  - a. Minimum required parking dimensions shall be clear of any obstructions.
  - b. At the ends of dead-end drive aisles, provide a designated turn-around space, minimum 8'-6" clear in width (locate on left side if available), including 3'-0" vehicular maneuvering area for exiting. Turn-around area shall be clearly demarcated.
  - c. Provide a minimum 2'-0" of additional width for parking spaces when adjacent to a continuous wall.

### Building Elevations

7. The materials and colors are approved as presented:



Split-faced CMU – Existing field color (light taupe)

Split-faced CMU – Existing accent color (dark warm grey)

Painted concrete – to match split face field color

Painted concrete – to match split face accent color

Provide main colors and materials with a light reflectance value of 75 percent or less. Specific colors and materials exhibited on the materials sample board are approved by planning staff. Submit any additions or modifications for review during building plan check process.

8. Minimize visible, external features, such as overflows, and where needed design these to enhance the architecture of the building.
9. Incorporate lighting, address signs, and incidental equipment attachments (alarm klaxons, security cameras, etc.) where exposed into the design of the building elevations. Exposed conduit, piping, or related materials is not permitted.
10. Locate the electrical service entrance section (S.E.S.) inside the building or inside a secure yard that is concealed from public view.

### Lighting

11. This project shall follow requirements of ZDC Part 4, Chapter 8, Lighting, unless otherwise conditioned.
12. Illuminate building entrances and underside of open stair landings from dusk to dawn to assist with visual surveillance at these locations.

### Landscape

13. Existing landscape material to remain; new plant material to comply with Zoning and Development Code 4-704 C.4. regarding plant heights adjacent to pedestrian areas. Modifications may be submitted during building plan check process.
14. Irrigation notes:
  - a. Provide pipe distribution system of buried rigid (polyvinylchloride), not flexible (polyethylene). Use of schedule 40 PVC mainline and class 315 PVC ½" feeder line is acceptable. Class 200 PVC feeder line may be used for sizes greater than ½" (if any). Provide details of water distribution system.
  - b. Hardwire power source to controller (a receptacle connection is not allowed).
  - c. Controller valve wire conduit may be exposed if the controller remains in the mechanical yard.
  - d. Provide temporary irrigation to all existing plants to remain, repair existing irrigation system where damaged by work of this project. Design irrigation so that existing plants are irrigated as part of the reconfigured system at the conclusion of this construction.
15. Include requirement to de-compact soil in planting areas on site and in public right of way and remove construction debris from planting areas prior to landscape installation.
16. Top dress planting areas with a rock or decomposed granite application. Provide rock or decomposed granite of 2" uniform thickness or less. Provide pre-emergence weed control application and do not underlay rock or decomposed granite application with plastic.

### Signage

17. Verify property address for this property with Land Services and provide address sign(s) on the building elevation facing the street to which the property is identified.
  - a. Conform to the following for building address signs:
    - 1) Provide street number only, not the street name.
    - 2) Compose of 12" high, individual mount, metal reverse pan channel characters.
    - 3) Self-illuminated or dedicated light source.
    - 4) Coordinate address signs with trees, vines, or other landscaping, to avoid any potential visual obstruction.
    - 5) Do not affix number or letter to elevation that might be mistaken for the address.

## CODE/ORDINANCE REQUIREMENTS:

THE BULLETED ITEMS REFER TO EXISTING CODE OR ORDINANCES THAT PLANNING STAFF OBSERVES ARE PERTINENT TO THIS CASE. THE BULLET ITEMS ARE INCLUDED TO ALERT THE DESIGN TEAM AND ASSIST IN OBTAINING A BUILDING PERMIT AND ARE NOT AN EXHAUSTIVE LIST.

- Specific requirements of the **Zoning and Development Code (ZDC)** are not listed as a condition of approval, but will apply to any application. To avoid unnecessary review time and reduce the potential for multiple plan check submittals, become familiar with the ZDC. Access the ZDC through [www.tempe.gov/planning/documents.htm](http://www.tempe.gov/planning/documents.htm) or purchase from Development Services.
- **SITE PLAN REVIEW:** Verify all comments by the Public Works Department, Development Services Department, and Fire Department given on the Preliminary Site Plan Reviews dated June 9<sup>th</sup> and 30<sup>th</sup>, 2010. If questions arise related to specific comments, they should be directed to the appropriate department, and any necessary modifications coordinated with all concerned parties, prior to application for building permit. Construction Documents submitted to the Building Safety Department will be reviewed by planning staff to ensure consistency with this Design Review approval prior to issuance of building permits.
- **STANDARD DETAILS:**
  - Access standard engineering details at this link: [www.tempe.gov/engineering/standard\\_details.htm](http://www.tempe.gov/engineering/standard_details.htm) or purchase book from the Public Works Engineering Division.
  - Access standard refuse enclosures at this link: [www.tempe.gov/bsafety/Applications\\_Forms/applications\\_and\\_forms.htm](http://www.tempe.gov/bsafety/Applications_Forms/applications_and_forms.htm). The enclosure details are under Civil Engineering & Right of Way.
- **BASIS OF BUILDING HEIGHT:** Measure height of buildings from top of curb at a point adjacent to the center of the front property line.
- **PUBLIC ART:** Provide public art for this development in conformance with the Art in Private Development Ordinance and ZDC Sec. 4-407 and ZDC Appendix D. Contact the Community Services Cultural Services Division regarding implementation of this requirement prior to receiving building permits.
- **SECURITY REQUIREMENTS:**
  - Design building entrance(s) to maximize visual surveillance of vicinity. Limit height of walls or landscape materials, and design columns or corners to discourage opportunity for ambush opportunity. Distances of 20'-0" or greater, between a pedestrian path of travel and any hidden area allow for increased reaction time and safety.
  - Follow the design guidelines listed under appendix A of the Zoning and Development Code. In particular, reference the CPTED principal listed under A-II Building Design Guidelines (C) as it relates to the location of pedestrian environments and places of concealment.
  - Provide a security vision panel at service and exit doors (except to rarely accessed equipment rooms) with a 3" wide high strength plastic or laminated glass window, located between 43" and 66" from the bottom edge of the door.
- **FIRE:** Clearly define the fire lanes. Ensure that there is at least a 20'-0" horizontal width, and a 14'-0" vertical clearance from the fire lane surface to the underside of tree canopies or overhead structures. Layout and details of fire lanes are subject to Fire Department approval.
- **ENGINEERING:**
  - Coordinate site layout with Utility provider(s) to provide adequate access easement(s).
  - Clearly indicate property lines, the dimensional relation of the buildings to the property lines and the separation of the buildings from each other.
  - Verify location of any easements, or property restrictions, to ensure no conflict exists with the site layout or foundation design.
  - 100 year onsite retention required for this property, coordinate design with requirements of the Engineering Department.
- **DRIVEWAYS:**
  - No change to existing proposed.
  - Correctly indicate clear vision triangles at driveways on the site and landscape plans. Identify speed limits for adjacent streets at the site frontages. Begin sight triangle in driveways at point 15'-0" in back of face of curb. Consult "Corner Sight

Distance" leaflet, available from Traffic Engineering if needed. Do not locate site furnishings, screen walls or other visual obstructions over 2'-0" tall (except canopy trees are allowed) within each clear vision triangle.

- **PARKING SPACES:**

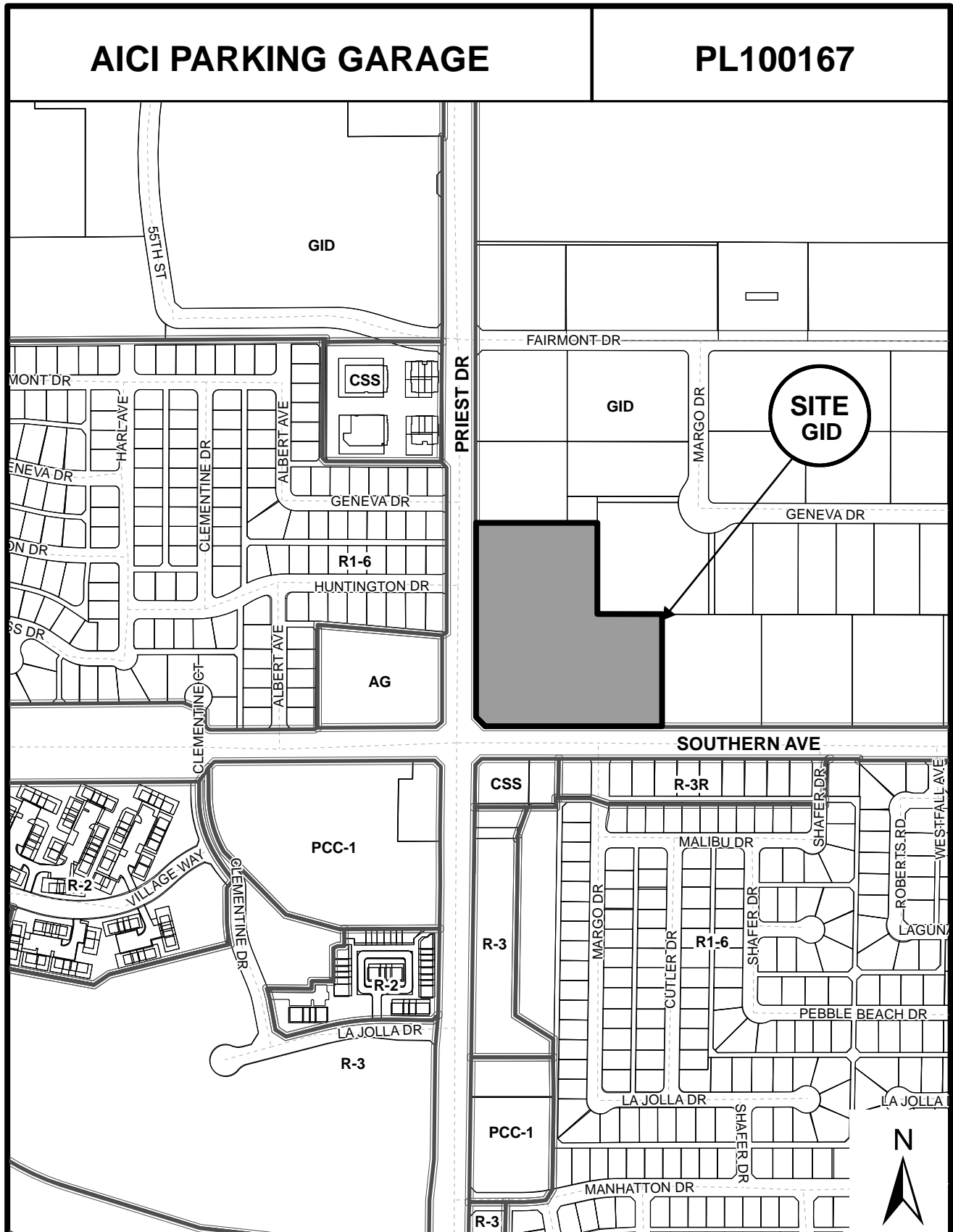
- Verify conformance of accessible vehicle parking to the Americans with Disabilities Act of 1990 (42 U.S.C.A. §12101 ET SEQ.) and the Code of Federal Regulations Implementing the Act (28 C.F.R., Part 36, Appendix A, Sections 4.1 and 4.6). Refer to Standard Detail T-360 for parking layout and accessible parking signs.
  - At parking areas, provide demarcated accessible aisle for disabled parking.
  - Distribute bike parking areas nearest to main entrance(s). Provide parking loop/rack per standard detail T-578. Provide 2'-0" by 6'-0" individual bicycle parking spaces. One loop may be used to separate two bike parking spaces. Provide clearance between bike spaces and adjacent walkway to allow bike maneuvering in and out of space without interfering with pedestrians, landscape materials or vehicles nearby.
- **LIGHTING:** Indicate the location of all exterior light fixtures on the site, landscape and photometric plans. Avoid conflicts between lights and trees or other site features in order to maintain illumination levels for exterior lighting.
  - **LANDSCAPE:** Move, preserve in place, or demolish native or "protected" trees and plants per State of Arizona Agricultural Department standards. File Notice of Intent to Clear Land with the Agricultural Department. Notice of Intent to Clear Land form is available at [www.azda.gov/ESD/nativeplants.htm](http://www.azda.gov/ESD/nativeplants.htm) . Follow the link to "applications to move a native plant" to "notice of intent to clear land".
  - **SIGNS:** Separate Development Plan Review process is required for signs in accordance with requirements of ZDC Part 4 Chapter 9 (Signs). Obtain sign permit for identification signs. Directional signs (if proposed) may not require a sign permit, depending on size. Directional signs are subject to review by planning staff during plan check process.

#### **HISTORY & FACTS:**

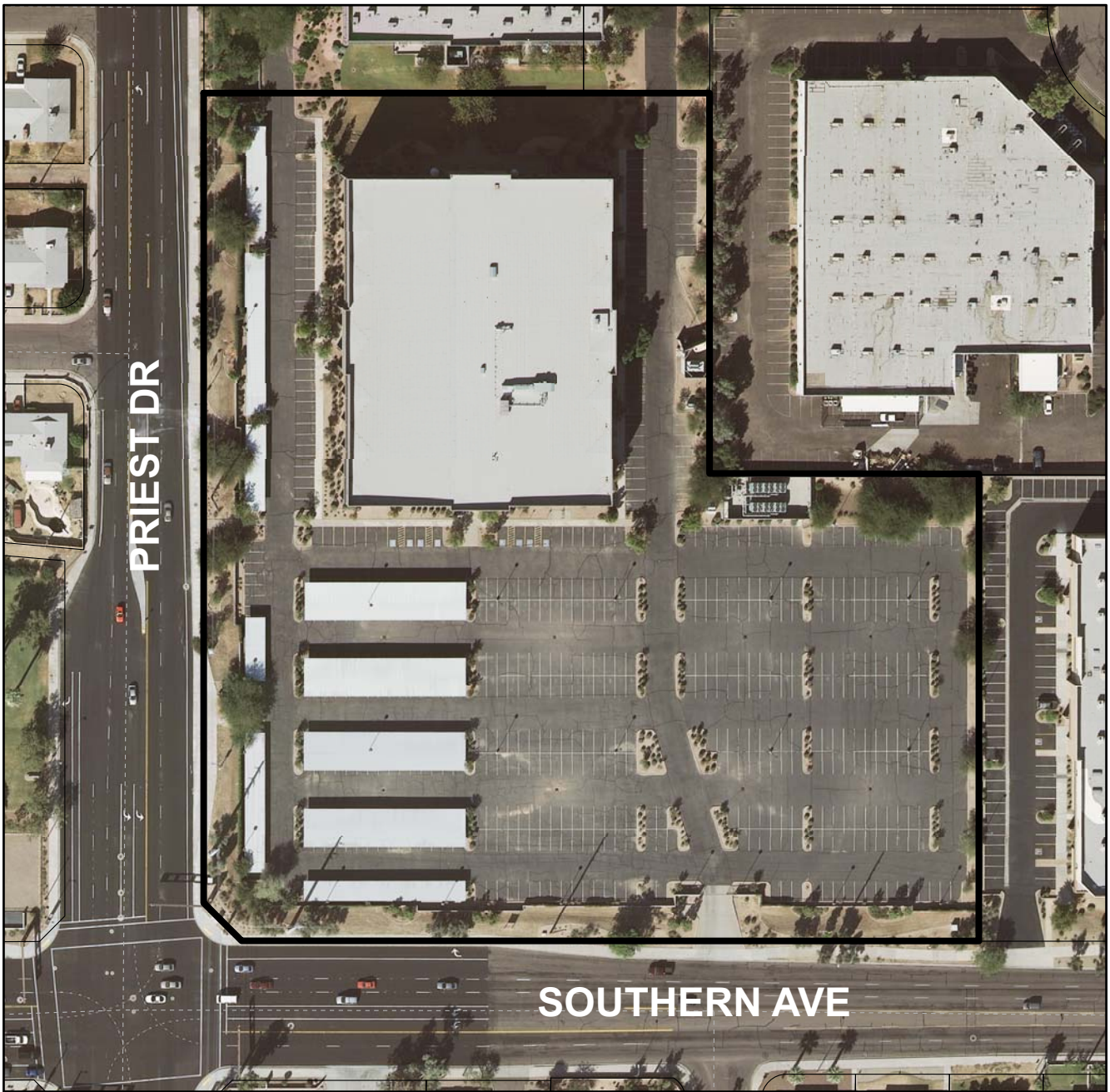
October, 1978	City Council approved a subdivision for Broadway Industrial Park Unit 4.
May 20, 1997	Hearing Officer approved a request by MicroAge to increase the maximum allowable building height from 35' to 45' to allow a 150,000 s.f. office building at 1360 W. Southern Avenue.
September 3, 1997	Design Review Board approved building elevations, site and landscape plan for a new 3-story 151,218 s.f. office building located at 1360 W. Southern Avenue.
December 1, 1998	Hearing Officer approved a variance to reduce the number of required bicycle parking spaces within the ASU Commute Area from 122 spaces to 40 spaces for Microage, located in I-1 & I-2 General Industrial Districts, located at 3217 S. Priest Drive.

#### **ZONING AND DEVELOPMENT CODE REFERENCE:**

Section 6-306, Development Plan Review



**Location Map**



**AICI PARKING GARAGE (PL100167)**



# **VA**rchitects

ARCHITECTURE • PLANNING • INTERIORS

VERNON P. ANDERSON ARCHITECT

14424 North 13th Street • Phoenix, Arizona 85022

Tel. (602) 993-8798 Fax. (602) 993-2804

July 14, 2010

City of Tempe  
Development Services Department  
Building Safety Division  
31 East Fifth Street  
Tempe, Arizona 85281  
Attention : Diana Kaminski

"AIC Parking Garage" located at  
1280 West Southern Avenue

RE: Project #SPR10042

#10-13

SUBJECT: Project Narrative

The intent of this project is to provide additional parking for an existing three story office building. A tenant currently occupies the lower floors as follows: 49,600 s.f. of office space on the first floor and 49,600 s.f. of call center on the second floor. Another tenant will occupy the third floor with 34,202 s.f. of call center and 17,816 s.f. of office space. The existing site does not have sufficient parking to meet the requirements of the current and proposed tenants, therefore a parking garage is needed to meet the on site parking needs. MicroAge, the first occupant of the building in the late 1990's, had planned to build a parking structure on this portion of the site, but did not follow through with construction.

Required parking for the existing and proposed tenants would be as follows:

First Floor offices 49,600 s.f. / 300	= 166 spaces
Second Floor call center 49,600 s.f. / 150	= 331 spaces
Third Floor call center 34,202 s.f. / 150	= 228 spaces
Third Floor office area 17,816 s.f. / 300	= 60 spaces
<u>Total Required = 785 spaces</u>	

The existing parking lot has 645 spaces (including 18 ADA accessible spaces) of which 186 spaces would be removed for the new parking structure leaving 459 existing parking spaces. Parking on the ground level and two new levels would provide 464 new additional spaces (including 6 ADA accessible spaces) for a total of 923 parking spaces (24 ADA accessible).



March 15, 2010  
AIC Parking Garage  
Page 2

The existing project site is  $\pm$  9.63 gross acre (419,400 s.f.),  $\pm$  7.63 net acre (345,692 s.f.) of which approximately 1.91 net acre of the will be modified for the new parking structure. The garage will be located east of the main site drive with the entry at the north end to minimize traffic congestion at the site entry drive on Southern Avenue. Existing paving on the ground level will be utilized where possible with new parking striping oriented to the parking ramp layout.

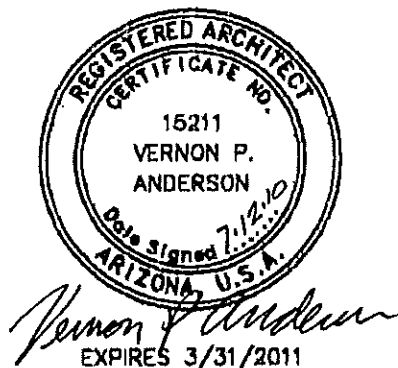
A six (6) foot high split faced CMU wall follows the entire perimeter of the site screening the parking from the both Southern Avenue and Preist Drive. Existing landscaping on both sides of the wall provides additional screening. Within the site the parking areas are landscaped and additional landscaping material will be installed on the west side of the parking garage. All new planting has been selected to match or harmonize the existing palette.

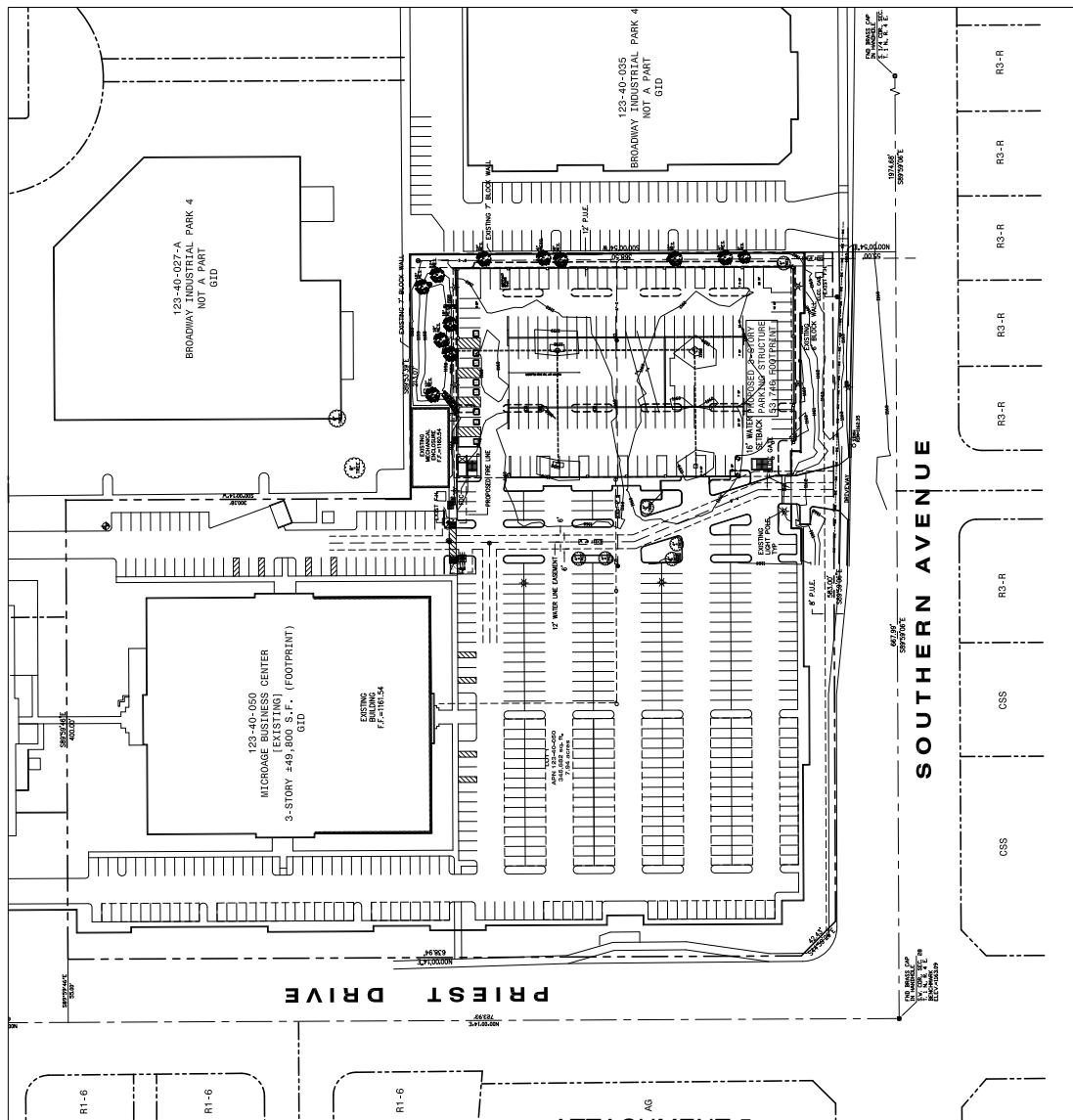
The existing office building is constructed with gray split-faced concrete blocks and the new parking garage will be constructed of precast concrete throughout. To harmonize with the existing building the new structure will have split-faced veneer accents at the exterior face on concrete column and the stairways and elevator enclosure will be constructed of split faced CMU. The exterior of the building will also be painted to match the existing building.

If you need any additional information regarding this project, please call me.  
602-568-0573

Sincerely,

Vernon P. Anderson Architect





# MASTER SITE PLAN

SCALE:



NORTH

## SITE NOTES

- [illegible]

## LAND USE DATA

**EXISTING ZONING:**

## PROJECT DATA

GROSS AREA: 49.63 AC (419,400 S.F.)  
NET AREA: 47.93 ACR. (345,682 S.F.)

LANDSCAPE AREA [EXISTING]:  
EXISTING

CONSTRUCTION TYPE:  
II-B 18C  
(NFA 13)

FIRE SPRINKLERS THROUGHOUT

## EXISTING BUILDING DATA

**BUILDING [3-STORY EXISTING]**  
THE EXISTING BUILDING INFORMATION IS AS FOLLOWS:

1ST FLOOR OFFICE USE	49,600 S.F.	/	300	=	166 SPACES
2ND FLOOR CALL CENTER	49,600 S.F.	/	150	=	331 SPACES
3RD FLOOR CALL CENTER	34,202 S.F.	/	150	=	228 SPACES
3RD FLOOR OFFICE USE	17,816 S.F.	/	300	=	60 SPACES

**TOTAL PARKING REQUIRED= 785 SPACES**

## PARKING

**PROVIDED TEXTING(0):** 046-108= 469 SPACES (17 INCLUDING 9 ACCESSIBLE ADA)  
108 DELETION WITH NEW PARKING STRUCTURE

**PROPOSED PARKING [3-STORY STRUCTURE]:** 4821(157)+188(200)+134(380) = 464 SPACES

**TOTAL PARKING PROPOSED:** 459 + 464 = 923 PARKING SPACES  
INCLUDING 2 ACCESSIBLE SPACES  
PLUS 38 COMPACT SPACES

## OWNER

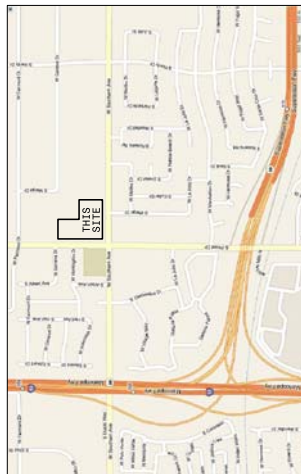
**WISTEROCK LLC**  
2321 ROSECRANS AVENUE, SUITE 2230  
EL SEQUO, CA 90245  
PH: 310-725-0006 FAX: 310-725-0022

## ARCHITECT

VERNON P. ANDERSON  
14424 NORTH 13TH STREET  
PHOENIX, ARIZONA 85022  
TEL (602) 992-8798

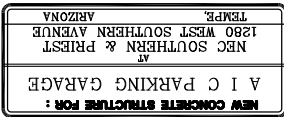
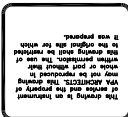
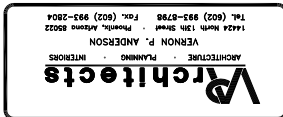
PROJECT DESCRIPTION	DATE	STATUS
Project A: New Product Development	2023-01-15	In Progress
Project B: Marketing Campaign Launch	2023-02-01	Completed
Project C: System Upgrade	2023-03-10	On Hold
Project D: Customer Service Improvement	2023-04-05	Planned

THE PURPOSE OF THIS PROJECT IS TO PROVIDE ADDITIONAL PARKING FOR AN EXISTING 3-STORY OFFICE BUILDING. FLOORS 1 & 2 ARE CURRENTLY OCCUPIED BY A CALL CENTER. TENANT AND A LEASE HAVE BEEN COMPLETED FOR A CALL CENTER ON THE 3RD FLOOR. THE TENANTS ARCHITECT HAS DETERMINED THAT THE COMBINED PARKING REQUIREMENT FOR THE TWO TENANTS IS 788 SPACES. THE NEW STRUCTURE WILL MEET THE REQUIREMENTS WITH EXISTING SITE PARKING.



### VICINITY MAP

REVIEWS	BY
1	
2	
3	
4	
5	
6	
7	
8	



DRAWN VPA	CHECKED VPA	DATE 6-21-10	SHT. TITLE PLAN PLAN	JOB NO. 10-13	SHEET <b>A1</b>
--------------	----------------	-----------------	----------------------------	------------------	--------------------

AND CONSTRUCTION, INC. 1928 EAST HIGHLAND, SUITE F104-617, PHOENIX, ARIZONA 602200.9525

A1



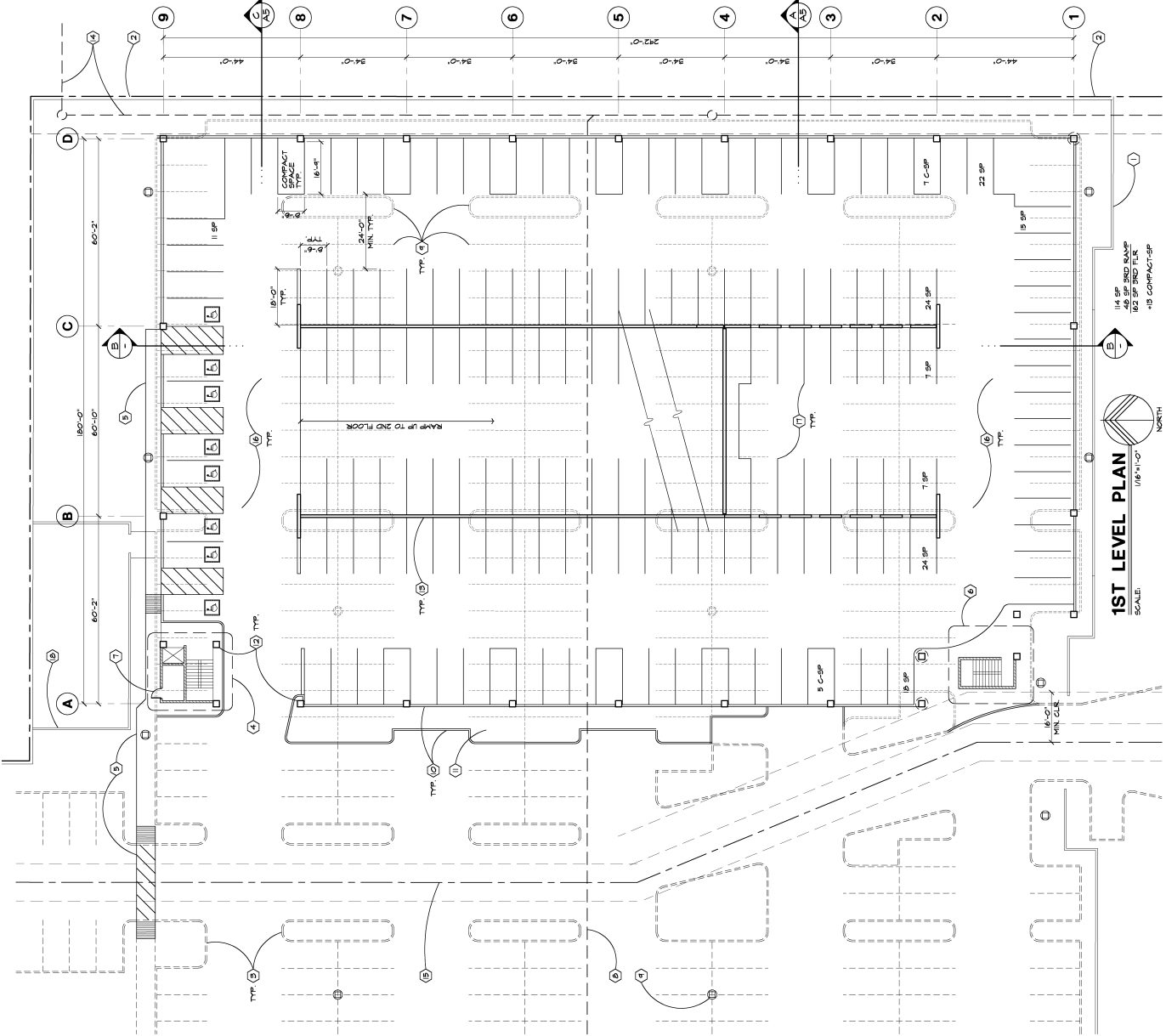
NEW CONCRETE STRUCTURE FOR:  
A I C PARKING GARAGE  
AT  
NEC SOUTHERN & PREIST  
1280 WEST SOUTHERN AVENUE  
TEMPE,  
ARIZONA

MD CONSTRUCTION, INC. 1928 EAST HIGHLAND, SUITE F104-617, PHOENIX, ARIZONA 602.200.9525

Architects  
VENNON J. ANDERSON  
PLANNING  
INTERIORS  
1424 North 12th Street  
Phoenix, Arizona 85024  
TEL (602) 993-8788  
Fax: (602) 993-2604

SEAL  
VENNON J. ANDERSON  
12071  
REGISTERED PROFESSIONAL ARCHITECT  
ARIZONA  
EXPIRES 3/31/2011

REVISIONS  
BY  
DATE  
1  
2  
3  
4  
5  
6  
7  
8  
9  
10  
11  
12  
13  
14  
15  
16  
17  
18  
19  
20  
21  
22  
23  
24  
25  
26  
27  
28  
29  
30  
31  
32  
33  
34  
35  
36  
37  
38  
39  
40  
41  
42  
43  
44  
45  
46  
47  
48  
49  
50  
51  
52  
53  
54  
55  
56  
57  
58  
59  
60  
61  
62  
63  
64  
65  
66  
67  
68  
69  
70  
71  
72  
73  
74  
75  
76  
77  
78  
79  
80  
81  
82  
83  
84  
85  
86  
87  
88  
89  
90  
91  
92  
93  
94  
95  
96  
97  
98  
99  
100  
101  
102  
103  
104  
105  
106  
107  
108  
109  
110  
111  
112  
113  
114  
115  
116  
117  
118  
119  
120  
121  
122  
123  
124  
125  
126  
127  
128  
129  
130  
131  
132  
133  
134  
135  
136  
137  
138  
139  
140  
141  
142  
143  
144  
145  
146  
147  
148  
149  
150  
151  
152  
153  
154  
155  
156  
157  
158  
159  
160  
161  
162  
163  
164  
165  
166  
167  
168  
169  
170  
171  
172  
173  
174  
175  
176  
177  
178  
179  
180  
181  
182  
183  
184  
185  
186  
187  
188  
189  
190  
191  
192  
193  
194  
195  
196  
197  
198  
199  
200  
201  
202  
203  
204  
205  
206  
207  
208  
209  
210  
211  
212  
213  
214  
215  
216  
217  
218  
219  
220  
221  
222  
223  
224  
225  
226  
227  
228  
229  
230  
231  
232  
233  
234  
235  
236  
237  
238  
239  
240  
241  
242  
243  
244  
245  
246  
247  
248  
249  
250  
251  
252  
253  
254  
255  
256  
257  
258  
259  
260  
261  
262  
263  
264  
265  
266  
267  
268  
269  
270  
271  
272  
273  
274  
275  
276  
277  
278  
279  
280  
281  
282  
283  
284  
285  
286  
287  
288  
289  
290  
291  
292  
293  
294  
295  
296  
297  
298  
299  
300  
301  
302  
303  
304  
305  
306  
307  
308  
309  
310  
311  
312  
313  
314  
315  
316  
317  
318  
319  
320  
321  
322  
323  
324  
325  
326  
327  
328  
329  
330  
331  
332  
333  
334  
335  
336  
337  
338  
339  
340  
341  
342  
343  
344  
345  
346  
347  
348  
349  
350  
351  
352  
353  
354  
355  
356  
357  
358  
359  
360  
361  
362  
363  
364  
365  
366  
367  
368  
369  
370  
371  
372  
373  
374  
375  
376  
377  
378  
379  
380  
381  
382  
383  
384  
385  
386  
387  
388  
389  
390  
391  
392  
393  
394  
395  
396  
397  
398  
399  
400  
401  
402  
403  
404  
405  
406  
407  
408  
409  
410  
411  
412  
413  
414  
415  
416  
417  
418  
419  
420  
421  
422  
423  
424  
425  
426  
427  
428  
429  
430  
431  
432  
433  
434  
435  
436  
437  
438  
439  
440  
441  
442  
443  
444  
445  
446  
447  
448  
449  
450  
451  
452  
453  
454  
455  
456  
457  
458  
459  
460  
461  
462  
463  
464  
465  
466  
467  
468  
469  
470  
471  
472  
473  
474  
475  
476  
477  
478  
479  
480  
481  
482  
483  
484  
485  
486  
487  
488  
489  
490  
491  
492  
493  
494  
495  
496  
497  
498  
499  
500  
501  
502  
503  
504  
505  
506  
507  
508  
509  
510  
511  
512  
513  
514  
515  
516  
517  
518  
519  
520  
521  
522  
523  
524  
525  
526  
527  
528  
529  
530  
531  
532  
533  
534  
535  
536  
537  
538  
539  
540  
541  
542  
543  
544  
545  
546  
547  
548  
549  
550  
551  
552  
553  
554  
555  
556  
557  
558  
559  
560  
561  
562  
563  
564  
565  
566  
567  
568  
569  
570  
571  
572  
573  
574  
575  
576  
577  
578  
579  
580  
581  
582  
583  
584  
585  
586  
587  
588  
589  
590  
591  
592  
593  
594  
595  
596  
597  
598  
599  
600  
601  
602  
603  
604  
605  
606  
607  
608  
609  
610  
611  
612  
613  
614  
615  
616  
617  
618  
619  
620  
621  
622  
623  
624  
625  
626  
627  
628  
629  
630  
631  
632  
633  
634  
635  
636  
637  
638  
639  
640  
641  
642  
643  
644  
645  
646  
647  
648  
649  
650  
651  
652  
653  
654  
655  
656  
657  
658  
659  
660  
661  
662  
663  
664  
665  
666  
667  
668  
669  
670  
671  
672  
673  
674  
675  
676  
677  
678  
679  
680  
681  
682  
683  
684  
685  
686  
687  
688  
689  
690  
691  
692  
693  
694  
695  
696  
697  
698  
699  
700  
701  
702  
703  
704  
705  
706  
707  
708  
709  
710  
711  
712  
713  
714  
715  
716  
717  
718  
719  
720  
721  
722  
723  
724  
725  
726  
727  
728  
729  
730  
731  
732  
733  
734  
735  
736  
737  
738  
739  
740  
741  
742  
743  
744  
745  
746  
747  
748  
749  
750  
751  
752  
753  
754  
755  
756  
757  
758  
759  
760  
761  
762  
763  
764  
765  
766  
767  
768  
769  
770  
771  
772  
773  
774  
775  
776  
777  
778  
779  
780  
781  
782  
783  
784  
785  
786  
787  
788  
789  
790  
791  
792  
793  
794  
795  
796  
797  
798  
799  
800  
801  
802  
803  
804  
805  
806  
807  
808  
809  
810  
811  
812  
813  
814  
815  
816  
817  
818  
819  
820  
821  
822  
823  
824  
825  
826  
827  
828  
829  
830  
831  
832  
833  
834  
835  
836  
837  
838  
839  
840  
841  
842  
843  
844  
845  
846  
847  
848  
849  
850  
851  
852  
853  
854  
855  
856  
857  
858  
859  
860  
861  
862  
863  
864  
865  
866  
867  
868  
869  
870  
871  
872  
873  
874  
875  
876  
877  
878  
879  
880  
881  
882  
883  
884  
885  
886  
887  
888  
889  
890  
891  
892  
893  
894  
895  
896  
897  
898  
899  
900  
901  
902  
903  
904  
905  
906  
907  
908  
909  
910  
911  
912  
913  
914  
915  
916  
917  
918  
919  
920  
921  
922  
923  
924  
925  
926  
927  
928  
929  
930  
931  
932  
933  
934  
935  
936  
937  
938  
939  
940  
941  
942  
943  
944  
945  
946  
947  
948  
949  
950  
951  
952  
953  
954  
955  
956  
957  
958  
959  
960  
961  
962  
963  
964  
965  
966  
967  
968  
969  
970  
971  
972  
973  
974  
975  
976  
977  
978  
979  
980  
981  
982  
983  
984  
985  
986  
987  
988  
989  
990  
991  
992  
993  
994  
995  
996  
997  
998  
999  
1000



- KEY NOTES**
- EXISTING 6' HIGH CHU FENCE - SEE SOUTH ELEVATION SHEET A4.
  - EXISTING CHU FENCE AT PROPERTY LINE - SEE BUILDING SECTION AA ON SHEET A3.
  - EXISTING PARKING CURBS AND STRIPS TO REMAIN - NO CHANGE.
  - NEW ELEVATOR STAIRWAY AND ELEVATOR EQUIPMENT ROOM/FIRE RISER ROOM.
  - NEW SIDEWALK AND ACCESSIBLE ROUTE TO EXISTING OFFICE BUILDING.
  - NEW STAIRWAY.
  - NEW HOLLOW METAL DOOR IN CHU MALL TO ELEVATOR EQUIPMENT ROOM/FIRE RISER ROOM.
  - EXISTING 6' SEWER LINE - SEE SITE PLAN.
  - EXISTING PARKING CURBS AND STRIPS TO BE REMOVED UNDER NEW PARKING STRUCTURE.
  - NEW 6' CONCRETE CURBS.
  - NEW LANDSCAPE AREA - SEE LANDSCAPE PLANS.
  - NEW CONCRETE COLUMNS FOR PARKING STRUCTURE.
  - NEW CONCRETE RETAINING AND SHEAR WALLS AT RAMP.
  - EXISTING 6' SEWER LINE IN 12'-0" EASEMENT - SEE SITE PLAN.
  - EXISTING 6' WATER LINE IN 12'-0" EASEMENT - SEE SITE PLAN.
  - 16'-0" MINIMUM TO BUILDING STRUCTURE.
  - EXISTING ASPHALT PAVING TO REMAIN.
  - NEW PARKING STRIPS UNDER PARKING STRUCTURE.
  - EXISTING 6' HIGH CHU MECHANICAL EQUIPMENT ENCLOSURE.
  - EXISTING PARKING LOT LIGHT POLES TO REMAIN.

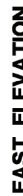


MD CONSTRUCTION, INC. 1928 EAST HIGHLAND, SUITE F104-617, PHOENIX, ARIZONA 602.200.9525

DRAWN VPA	CHECKED VPA	DATE 6-22-0	SHT. TITLE BUILDING ELEVATIONS	JOB NO. 10-19	SHEET <b>A4</b>
--------------	----------------	----------------	-----------------------------------	------------------	--------------------



8. APPROXIMATE PARKING GARAGE FINISH FLOOR LINES.

ATTACHMENT 9

REVISIONS	BY	DATE
1		
2		
3		
4		
5		
6		
7		
8		
9		
10		



**V Architects**  
ARCHITECTURAL PLANNING INTERIORS  
JASON P. ANDERSON  
TEL (602) 993-8788 Fax (602) 993-2804  
1444 North 12th Street • Phoenix, Arizona 85022

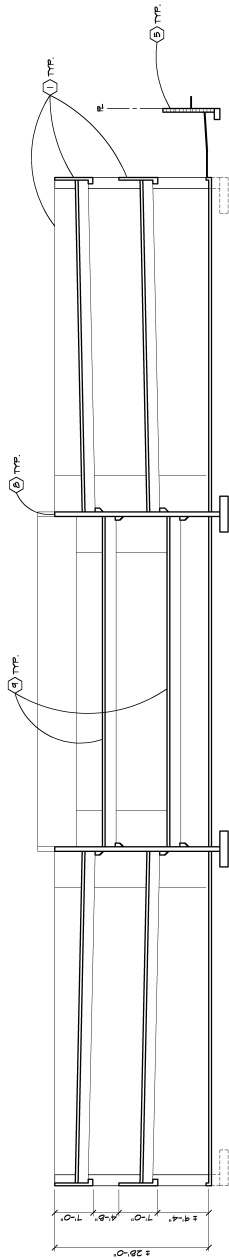
This drawing is an instrument of service and shall remain the property of V Architects. It shall not be reproduced, copied, or used in any way without the written consent of V Architects. The user of this drawing shall be responsible for the accuracy of the information provided and shall indemnify and hold V Architects harmless from all claims, damages, and expenses, including reasonable attorneys' fees, arising from or due to the use of this drawing.

**A I C PARKING GARAGE**  
NEW CONCRETE STRUCTURE FOR :  
AT  
1280 WEST SOUTHERN AVENUE  
TEMPE, ARIZONA

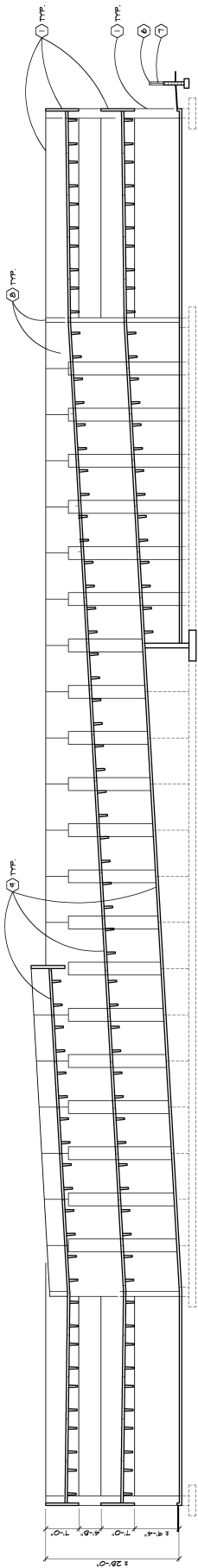
DRAWN	VPA
CHECKED	
IN CHARGE	
DATE	
SHEET	
BUILDING SECTIONS	
SHIT. TITLE	6-22-10
JOB NO.	
DATE	
SHEET	

**A5**

MD CONSTRUCTION, INC. 1928 EAST HIGHLAND, SUITE F104-617, PHOENIX, ARIZONA 602.200.9525



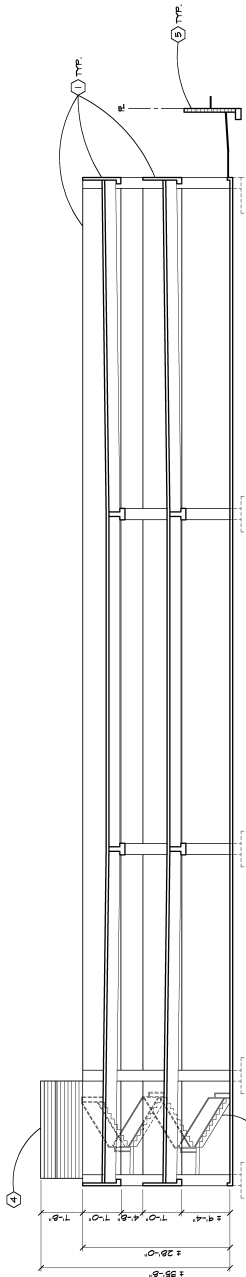
**BUILDING SECTION AA**  
SCALE: 1/8"=1'-0"



**BUILDING SECTION BB**  
SCALE: 1/8"=1'-0"

**KEY NOTES**

1. NEW CONCRETE SPANDREL PANEL WALL WITH 4" REVEAL AT TOP AND BOTTOM TO MATCH 4" CAU - TYPICAL
2. NEW 8" SPLIT-FACED VENEER OVER NEW CONCRETE COLUMNS TO MATCH EXISTING BUILDING WITH 4" CAU BANDS TO MATCH EXISTING BUILDING
3. NEW 8" SPLIT-FACED VENEER OVER NEW CONCRETE COLUMNS TO MATCH EXISTING BUILDING WITH 4" CAU BANDS TO MATCH EXISTING BUILDING
4. NEW SPANDREL EACH END OF BUILDING - SEE FLOOR PLANS
5. EXISTING CAU FENCE AT PROPERTY LINE 8' x 8' x 8' SPLIT-FACED WITH CONTINUOUS 8' x 4' x 8' CAU BANDS TOP OF WALL AT 7'-0" ABOVE FINISH GRADE THIS PROJECT SIDE 8'-0" A/E/S ADJACENT PROPERTY.
6. EXISTING 6" HIGH CAU FENCE 8' x 8' x 8' SPLIT-FACED WITH CONTINUOUS 8' x 4' x 8' CAU BANDS.
7. EXISTING PROPOSED IRON FENCING FROM 3' ABOVE FINISH GRADE TO 8'-0" ABOVE FINISH GRADE
8. NEW CONCRETE SPANDREL PANELS WITH OPENING EACH SIDE OF RAMP - SEE FLOOR PLANS - TYPICAL
9. CONCRETE RAMPED PARKING - SEE FLOOR PLANS - TYPICAL



**BUILDING SECTION CC**  
SCALE: 1/8"=1'-0"

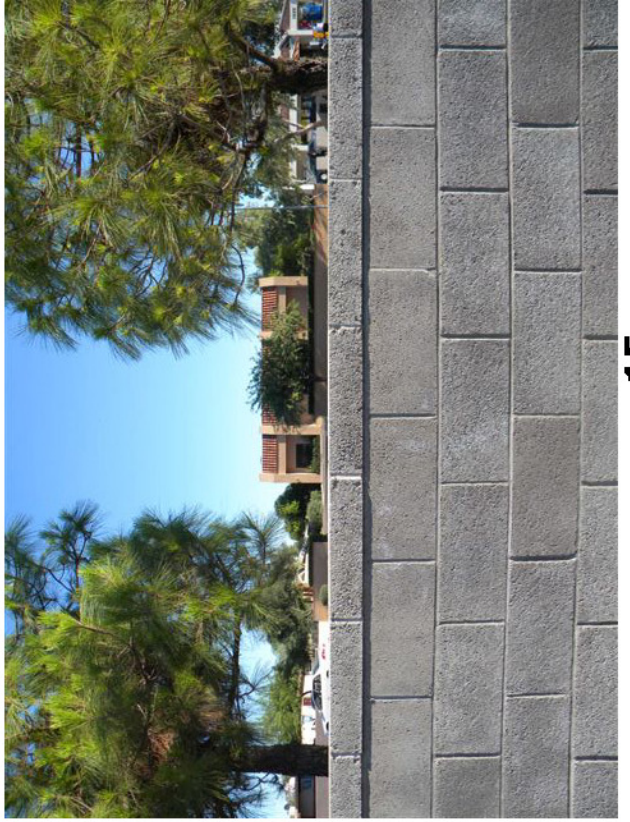








14



15



13

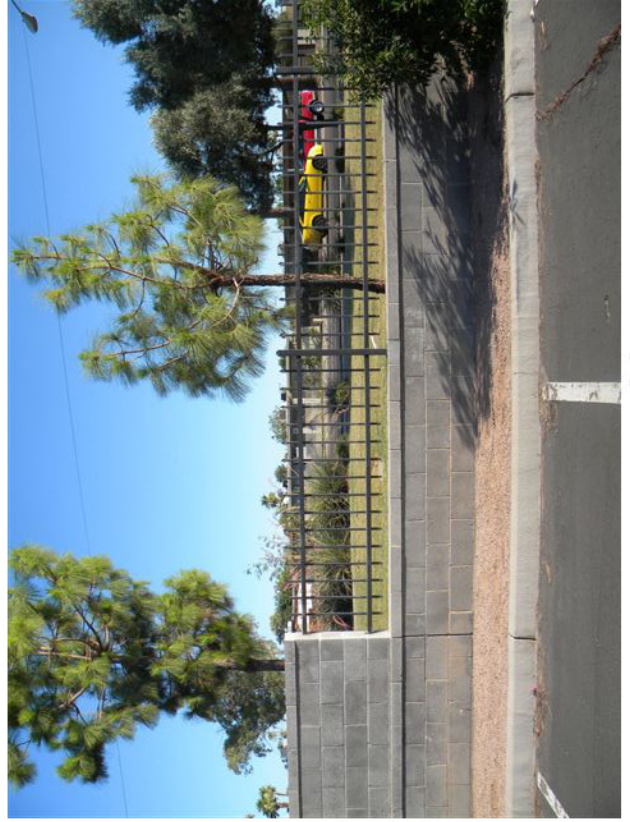


16





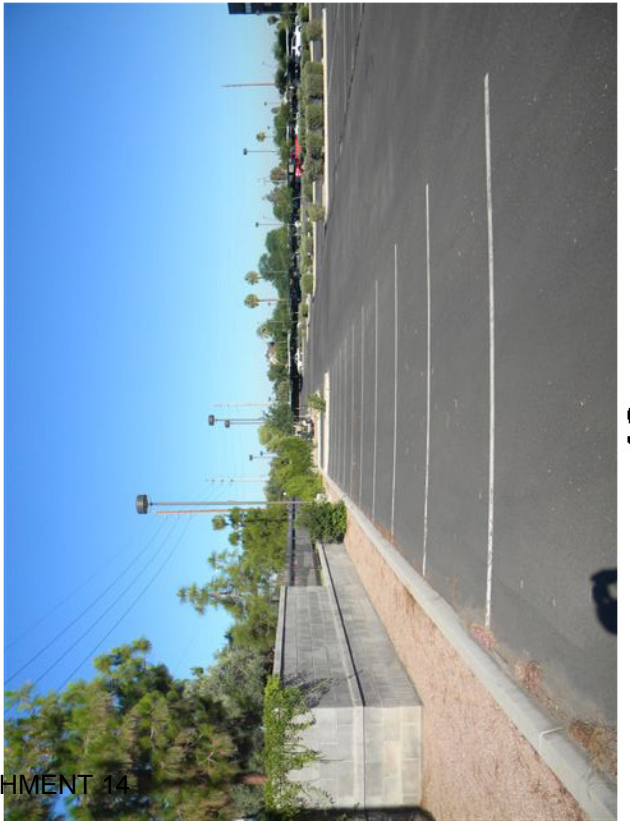
10



11



9



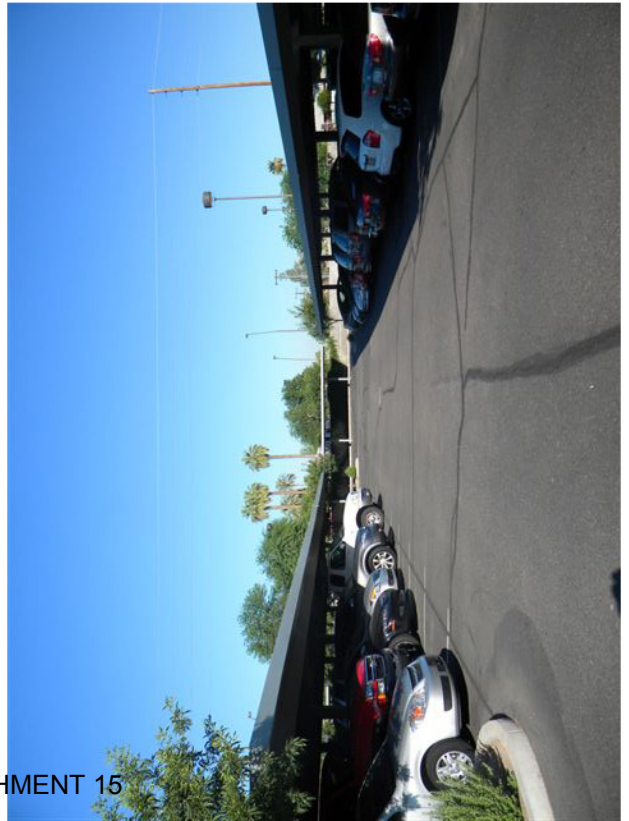
12



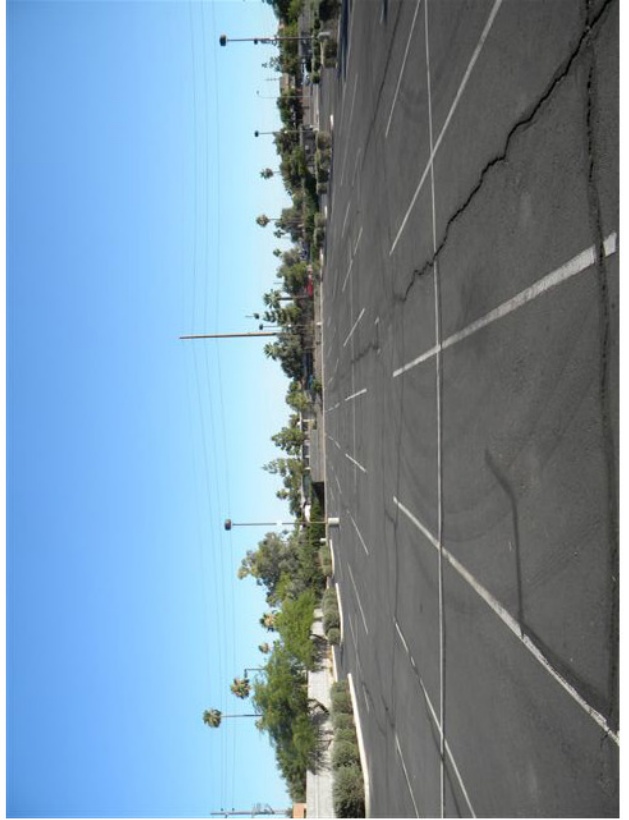
1



2



3

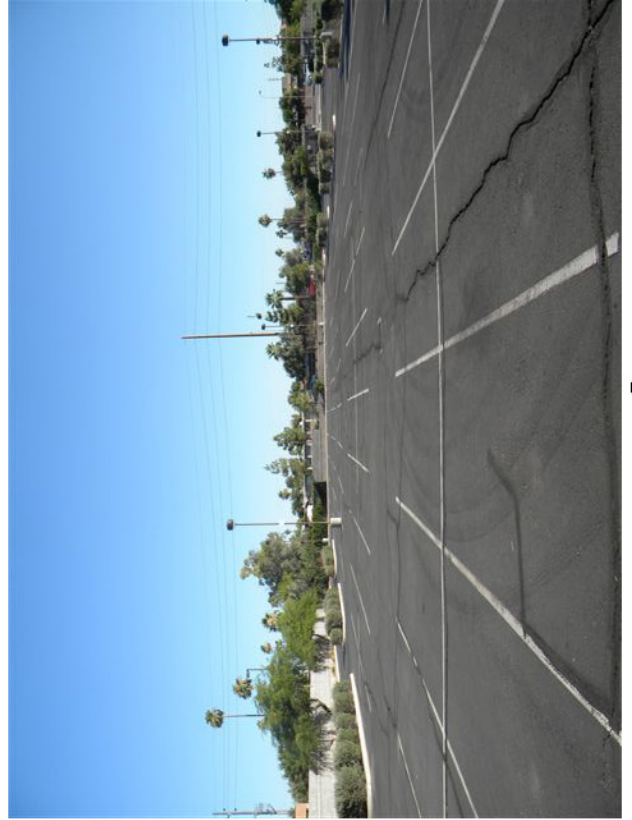


4





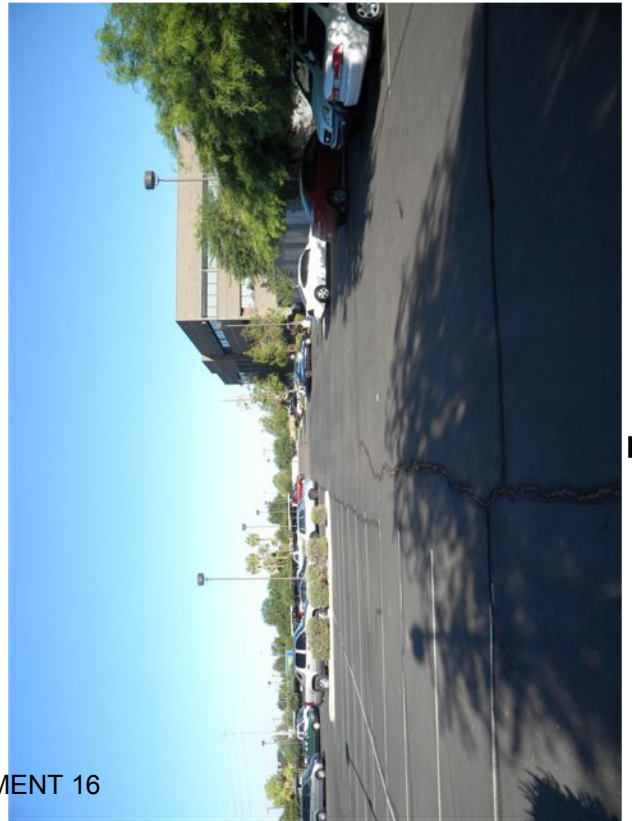
6



8



5



7

## COLOR SCHEDULE



**EXISTING SPLITFACE  
BLOCK 'FIELD COLOR'  
COLOR 'A'**



**NEW PAINT COLOR  
ON CONCRETE TO  
MATCH COLOR 'A'**



**EXISTING SPLITFACE  
BLOCK 'ACCENT COLOR'  
COLOR 'B'**



**NEW PAINT COLOR  
ON CONCRETE TO  
MATCH COLOR 'B'**



**EXISTING SCREEN WALL  
GRAY CLEAR STAINED BLOCK**

